



INSTRUCTION BULLETIN

No. 340844
Machine: Sentinel
Published: 12-2006
Rev. 00

NOTE: DO NOT DISCARD the Parts List from the Instruction Bulletin. Place the Parts List in the appropriate place in the machine manual for future reference. Retaining the Parts List will make it easier to reorder individual parts and will save the cost of ordering an entire kit.

NOTE: Numbers in parenthesis () are reference numbers for parts listed in Bill of Materials.

Installation instructions for **kit number 9003311 / 9003312**

SYNOPSIS:

These kits contain the parts needed to replace the left or right conveyor lift assemblies on Sentinel machines.

Please follow step-by-step instructions.

SPECIAL TOOLS / CONSIDERATIONS: NONE

(Estimated time to complete: 3 hours)

PREPARATION:

1. Park the machine on a clean level surface.
2. Raise the conveyor and turn off the machine.
3. Place a 6" block under each corner of the conveyor. The conveyor must be level with the frame of the machine.



FIG. 1

4. Start the machine and lower the conveyor onto the 6" blocks.
5. Turn off the machine, remove the key, and set the parking brake.

FOR SAFETY: Before leaving or servicing machine, stop on level surface, turn off machine, and remove key.

6. **Only if replacing the left conveyor lift assembly:** If machine is equipped with the Auto-Lube option, remove the Auto-Lube manifold from the left conveyor lift assembly. Set the Auto-Lube manifold aside.
7. If machine is equipped with leaf mode stops, remove the stops and hardware from the conveyor lift assembly being replaced. Set the leaf mode stops and hardware aside. Refer to Fig. 2.

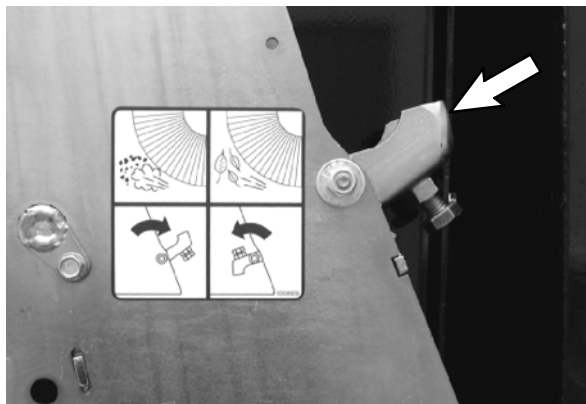


FIG. 2

INSTALLATION:

NOTE: Although this Instruction Bulletin applies to both the Right and the Left Conveyor Lift Groups, only the Left Conveyor Lift Group is shown in the drawings. All parts are in the same locations on both Conveyor Lift Groups.

1. Remove the two pins and hardware securing the lift cylinder to the conveyor lift assembly and place the lift cylinder aside, out of the way. Do Not disconnect any hydraulic hoses from the cylinder. Discard the pins and hardware. Refer to Fig. 3.

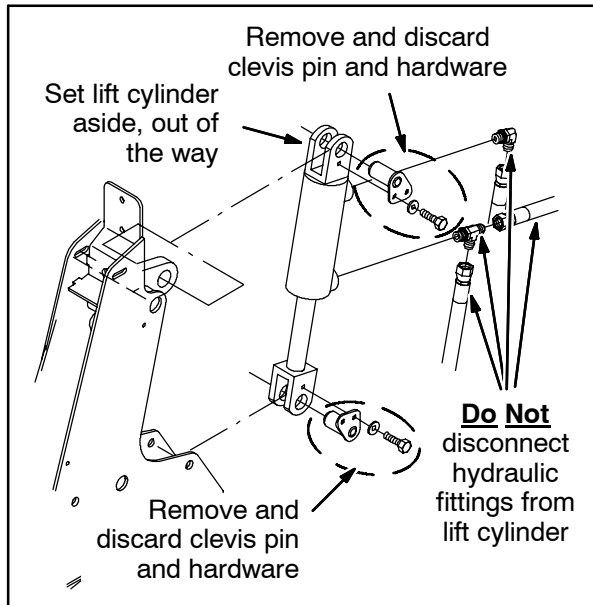


FIG. 3

2. Remove and discard the M16 hex screw and flat washer securing the rod end to the conveyor lift plate. Refer to Fig. 4.

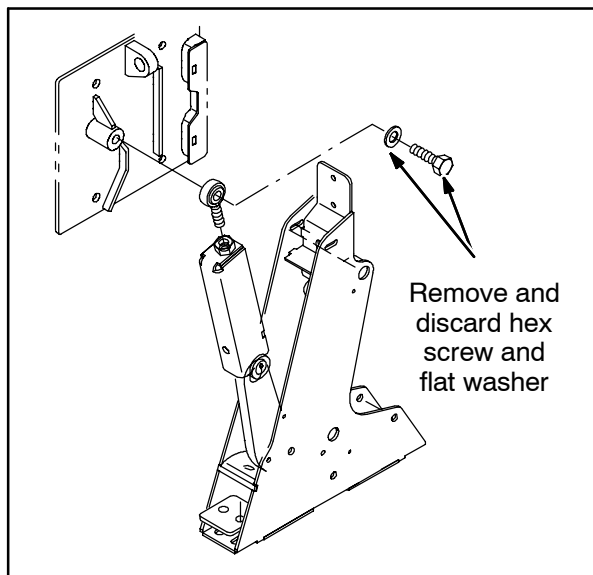


FIG. 4

3. Remove the door stop bracket and engine door bumper from the conveyor lift assembly. Set the bracket, bumper, and all hardware aside. Refer to Fig. 5.

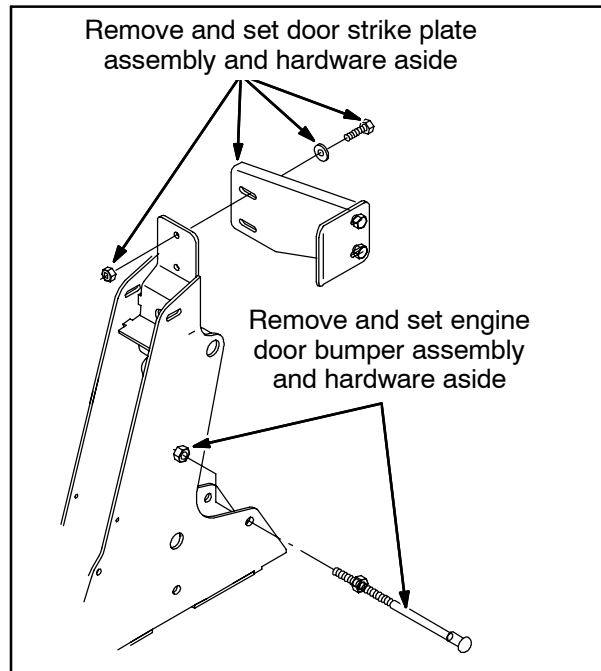


FIG. 5

4. Remove the four M12 hex nuts, flat washers, and both support plates securing the conveyor lift assembly to the frame of the machine. Discard the support plates and hardware. Refer to Fig. 6.

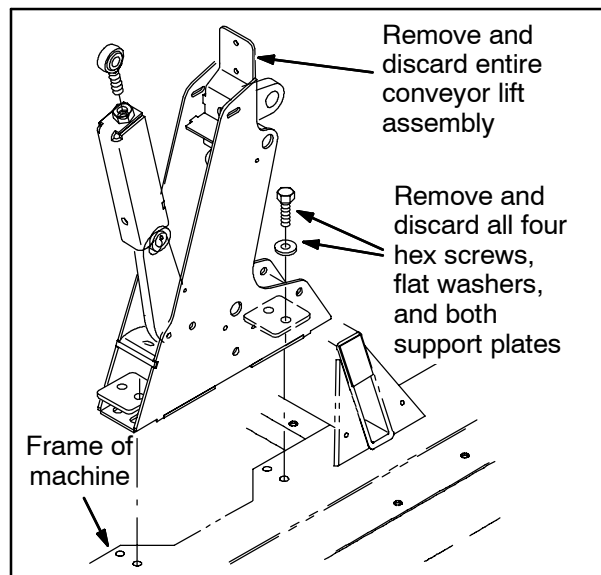


FIG. 6

5. Remove the conveyor lift assembly from the machine. Discard the entire conveyor lift assembly. Refer to Fig. 6.

6. Set the new conveyor lift assembly (1) onto the frame of the machine and use four hex screws (3), four flat washers (4), and two support plates (2) to secure the conveyor lift assembly onto the frame of the machine. Do not completely tighten the the four hex screws. Refer to Fig. 8.
7. Ensure the roller wheels in the conveyor lift assembly (1) are aligned with the conveyor lift plate and push the conveyor lift assembly as far forward in the slots as possible. Torque the four hex screws (3) to 64–83 Nm (47–61 ft. lbs). Refer to Fig. 8.

NOTE: Be sure the steel roller wheel is rotated as far to rear as possible and the plastic wheel is as far forward as possible.

8. Use the clevis pins (7), flat washers (9), and hex screws (8) to install the lift cylinder onto the conveyor lift assembly (1). Refer to Fig. 8.
9. Measure the length of the rod ends on both the right and left lift assemblies. Adjust to length shown in Fig. 7.

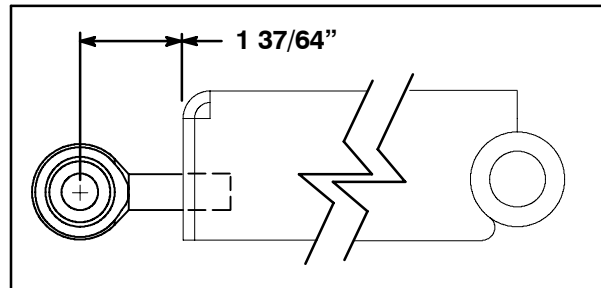


FIG. 7

10. Use a hex screw (5) and a flat washer (6) to install the rod end onto the conveyor lift plate. Refer to Fig. 8.

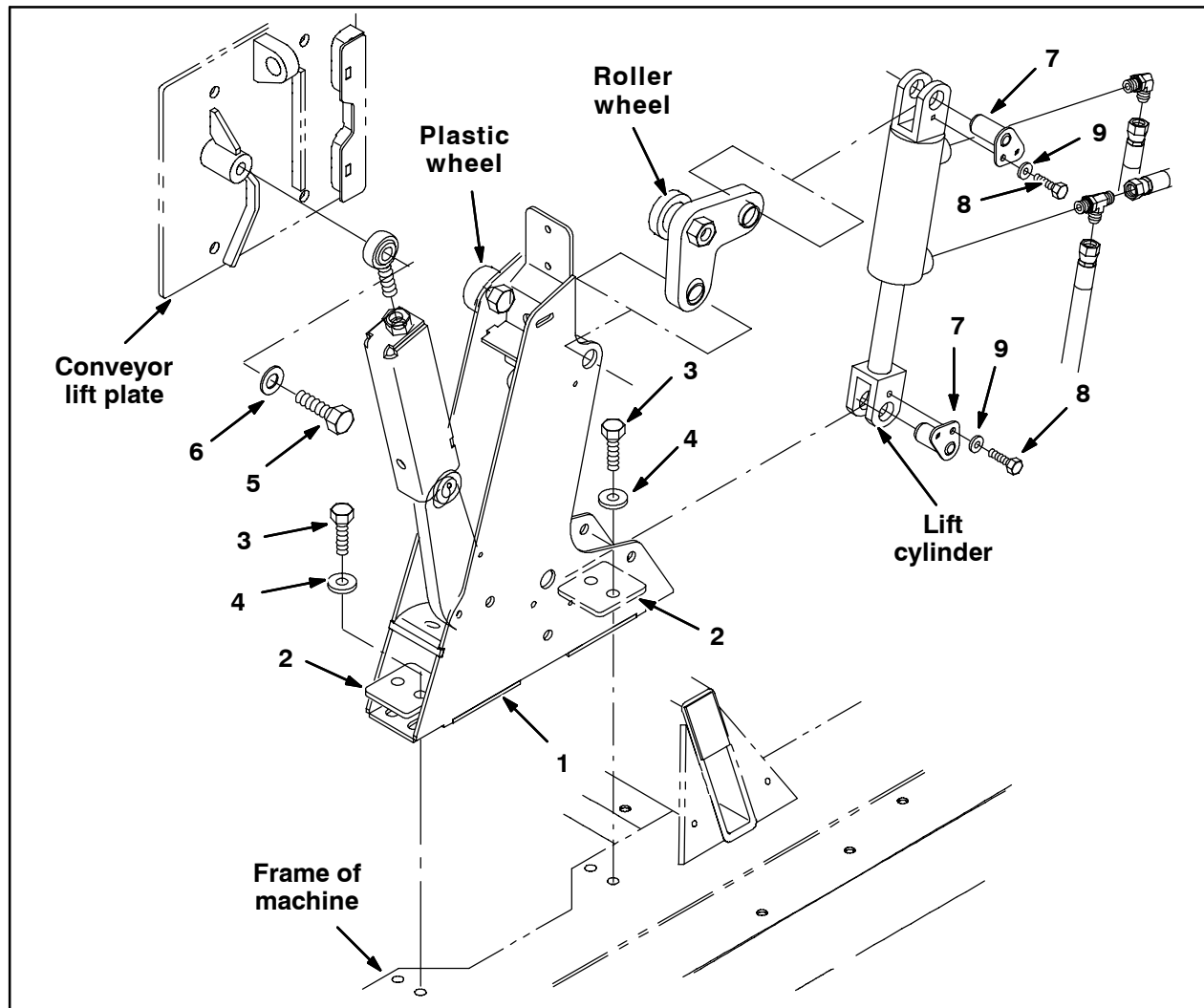


FIG. 8

11. **Only if replacing the left conveyor lift assembly:** If machine is equipped with the Auto-Lube option, reinstall the Auto-Lube manifold onto the left conveyor lift assembly (1).
12. Start the engine, raise the conveyor, and turn off the engine.
13. Remove the blocks from under the conveyor.
14. Measure the distance between the conveyor and the hydraulic reservoir on the right side of the machine. There should be between 1/16" to 1/8" clearance between the conveyor and the hydraulic reservoir. Proceed to Step 16 if there is adequate clearance. Proceed to Step 15 if there is not enough clearance between the conveyor and the hydraulic reservoir. Refer to Fig. 9.

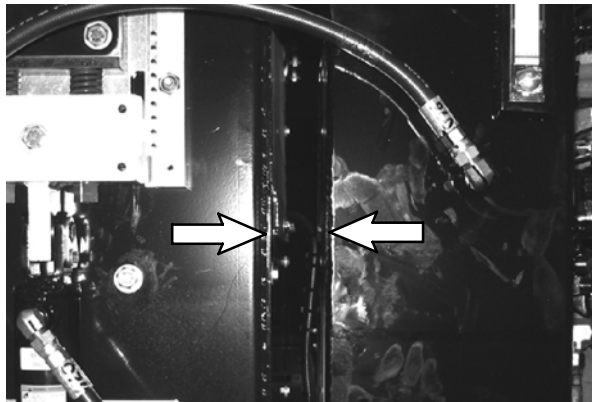


FIG. 9

15. If there is not at least 1/16" of clearance between the conveyor and the hydraulic reservoir, loosen the four hex screws (3) securing the conveyor lift assembly (1) to the frame of the machine, place a pry bar next to the hydraulic reservoir and pry the conveyor away from the hydraulic reservoir until there is adequate clearance. Torque the four hex screws to 64–83 Nm (47–61 ft. lbs). Refer to Fig. 10 and Fig. 8.



FIG. 10

16. Start the machine and operate the conveyor several times to ensure it operates correctly.
17. If machine is equipped with leaf mode stops, reinstall the stops onto the replaced conveyor lift assembly (1). Refer to Fig. 1.
18. Install the door stop bracket and engine door bumper from the old conveyor lift assembly onto the new conveyor lift assembly. Refer to Fig. 5.

Bill of Materials for Conveyor Kit, Lift Tower RH, Replmt-9003311

	Ref.	Tennant Part No.	Description	Qty.
▽		9003311	Conveyor Kit, Lift Tower RH, Replmt	1
▲	1	9003314	Conveyor Lift Tower, RH, Assy	1
▲	2	1009447	Plate, Sppt	2
▲	3	06968	Screw, Hex, M12 X 1.75 X 35, 8.8	4
▲	4	32486	Washer, Flat, 0.50, SAE	4
▲	5	06981	Screw, Hex, M16 X 2.0 X 40, 8.8	1
▲	6	15331	Washer, Flat, 0.62, SAE	1
▲	7	1007105	Pin Wldt, Clevis	2
▲	8	87308	Screw, Hex, M6 X 1.0 X 12, 8.8	2
▲	9	763040	Washer, Flat, Belleville, M6	2

Bill of Materials for Conveyor Kit, Lift Tower LH, Replmt-9003312

	Ref.	Tennant Part No.	Description	Qty.
▽		9003312	Conveyor Kit, Lift Tower LH, Replmt	1
▲	1	9003315	Conveyor Lift Tower, LH, Assy	1
▲	2	1009447	Plate, Sppt	2
▲	3	06968	Screw, Hex, M12 X 1.75 X 35, 8.8	4
▲	4	32486	Washer, Flat, 0.50, SAE	4
▲	5	06981	Screw, Hex, M16 X 2.0 X 40, 8.8	1
▲	6	15331	Washer, Flat, 0.62, SAE	1
▲	7	1007105	Pin Wldt, Clevis	2
▲	8	87308	Screw, Hex, M6 X 1.0 X 12, 8.8	2
▲	9	763040	Washer, Flat, Belleville, M6	2

TENNANT COMPANY
P. O. Box 1452
Minneapolis, MN 55440-1452